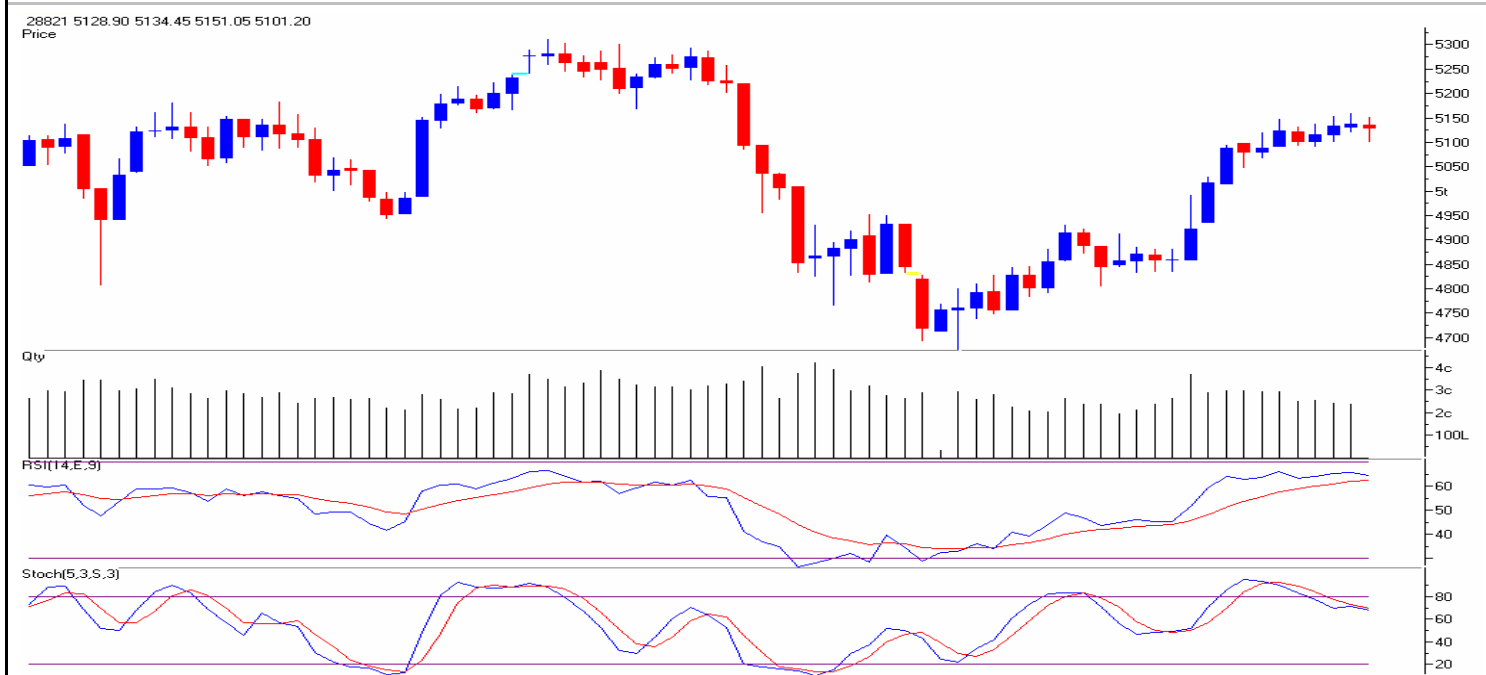


Date : 16/03/2010

Market Summary

Indices			Top 5 Gainers		Top 5 Losers		Sectoral Watch	
	Nifty	Sensex	Stocks	% Gain	Stocks	% Loss	Sector	% G / L
Open	5134.00	17167.00	HINDUNILVF	3.12	ABB	3.46	PSU	(1.38)
High	5151.00	17195.00	WIPRO	2.81	M&M	3.23	CG	(1.09)
Low	5101.00	17061.00	TCS	2.77	SUZLON	2.84	BANKEX	(1.03)
Close	5129.00	17165.00	HCLTECH	2.52	RELINFRA	2.62	REALTY	(0.79)
% Chg	(0.16)	(0.01)	JPASSOCIAT	2.34	ACC	2.19	IT	1.37



Source : Falcon

NIFTY DAILY CHART

Markets traded in a narrow range with extreme choppiness to close on a flat note. On the daily chart, the series of narrow range bodies clearly indicates that the preceding up move is losing steam and that the markets are showing no clear trend. Hence if indices trade below 17060 / 5100 levels then they are likely to test 16958 – 16875 / 5050 – 5028. On the flip side if 17244 / 5158 levels are crossed then we may see upward momentum till 17361 – 17412 / 5200 – 5228 levels.

Stocks +ve Bias
Stocks -ve Bias

PIVOTS

Stocks	Close	S2	S1	Pivot	R1	R2
SENSEX	17165.00	17006.00	17086.00	17141.00	17220.00	17275.00
NIFTY	5129.00	5077.00	5103.00	5127.00	5153.00	5177.00
ABB	846.00	819.00	832.00	854.00	867.00	888.00
ACC	980.00	963.00	972.00	986.00	994.00	1009.00
AMBUJACEM	117.00	114.00	115.00	116.00	117.00	118.00
AXISBANK	1143.00	1116.00	1129.00	1142.00	1155.00	1168.00
BHARTIARTL	300.00	286.00	293.00	297.00	304.00	308.00
BHEL	2368.00	2317.00	2342.00	2385.00	2410.00	2453.00
BPCL	528.00	510.00	519.00	529.00	538.00	548.00
CAIRN	273.00	267.00	270.00	274.00	277.00	281.00
CIPLA	314.00	308.00	311.00	316.00	319.00	324.00
DLF	310.00	302.00	306.00	309.00	312.00	315.00
GAIL	411.00	404.00	408.00	413.00	416.00	422.00
GRASIM	2879.00	2785.00	2832.00	2861.00	2908.00	2937.00
HCLTECH	369.00	352.00	361.00	366.00	374.00	379.00
HDFC	2675.00	2637.00	2656.00	2686.00	2705.00	2735.00
HDFCBANK	1813.00	1764.00	1788.00	1804.00	1828.00	1844.00
HEROHONDA	1911.00	1878.00	1894.00	1920.00	1936.00	1961.00
HINDALCO	166.00	160.00	163.00	165.00	168.00	171.00
HINDUNILVR	226.00	215.00	220.00	224.00	229.00	233.00
ICICIBANK	924.00	826.00	875.00	905.00	954.00	984.00
IDEA	60.00	58.00	59.00	60.00	61.00	62.00
IDFC	163.00	159.00	161.00	163.00	166.00	168.00
INFOSYSTCH	2701.00	2607.00	2654.00	2683.00	2731.00	2760.00
ITC	259.00	256.00	258.00	260.00	261.00	263.00
JINDALSTEL	677.00	665.00	671.00	677.00	684.00	690.00
JPASSOCIAT	149.00	142.00	145.00	147.00	151.00	153.00
LT	1554.00	1522.00	1538.00	1559.00	1575.00	1595.00
M&M	1105.00	1076.00	1091.00	1115.00	1130.00	1154.00
MARUTI	1446.00	1407.00	1427.00	1446.00	1465.00	1484.00
NTPC	202.00	198.00	200.00	201.00	203.00	204.00
ONGC	1070.00	1053.00	1061.00	1074.00	1083.00	1096.00
PNB	923.00	911.00	917.00	922.00	928.00	933.00
POWERGRID	105.00	103.00	104.00	105.00	106.00	107.00
RANBAXY	466.00	449.00	457.00	463.00	472.00	478.00
RCOM	158.00	155.00	157.00	159.00	160.00	162.00
RELCAPITAL	781.00	768.00	774.00	784.00	790.00	800.00
RELIANCE	1028.00	1006.00	1017.00	1024.00	1036.00	1043.00
RELINFRA	975.00	952.00	964.00	979.00	991.00	1006.00
RPOWER	139.00	137.00	138.00	139.00	140.00	142.00
SAIL	230.00	224.00	227.00	232.00	235.00	240.00
SBIN	2015.00	1990.00	2003.00	2024.00	2036.00	2057.00
SIEMENS	723.00	712.00	718.00	727.00	733.00	742.00
STER	826.00	798.00	812.00	826.00	840.00	854.00
SUNPHARMA	1623.00	1584.00	1603.00	1633.00	1653.00	1683.00
SUZLON	74.00	72.00	73.00	74.00	75.00	76.00
TATAMOTORS	769.00	742.00	756.00	766.00	779.00	789.00
TATAPOWER	1359.00	1333.00	1346.00	1353.00	1366.00	1373.00
TATASTEEL	610.00	598.00	604.00	610.00	617.00	623.00
TCS	818.00	781.00	799.00	810.00	828.00	839.00
UNITECH	74.00	72.00	73.00	74.00	75.00	76.00
WIPRO	729.00	700.00	714.00	723.00	737.00	746.00

RESEARCH TEAM

Shardul Kulkarni	Head - Technicals
Ajit Joshi	AVP - TAS
Brijesh Ail	Manager - TAS
Mileen Vasudeo	Technical Analyst
Krunal Dayma	Technical Analyst

For any Queries, Suggestions and Feedback kindly mail to vasudeo.kamalakant@angeltrade.com

Research Team: 022-3952 6600

Website: www.angelbroking.com

DISCLAIMER: This document is not for public distribution and has been furnished to you solely for your information and must not be reproduced or redistributed to any other person. Persons into whose possession this document may come are required to observe these restrictions.

Opinion expressed is our current opinion as of the date appearing on this material only. While we endeavor to update on a reasonable basis the information discussed in this material, there may be regulatory, compliance, or other reasons that prevent us from doing so. Prospective investors and others are cautioned that any forward-looking statements are not predictions and may be subject to change without notice. Our proprietary trading and investment businesses may make investment decisions that are inconsistent with the recommendations expressed herein.

The information in this document has been printed on the basis of publicly available information, internal data and other reliable sources believed to be true and are for general guidance only. While every effort is made to ensure the accuracy and completeness of information contained, the company takes no guarantee and assumes no liability for any errors or omissions of the information. No one can use the information as the basis for any claim, demand or cause of action.

Recipients of this material should rely on their own investigations and take their own professional advice. Each recipient of this document should make such investigations as it deems necessary to arrive at an independent evaluation of an investment in the securities of companies referred to in this document (including the merits and risks involved), and should consult their own advisors to determine the merits and risks of such an investment. Price and value of the investments referred to in this material may go up or down. Past performance is not a guide for future performance. Certain transactions - futures, options and other derivatives as well as non-investment grade securities - involve substantial risks and are not suitable for all investors. Reports based on technical analysis centers on studying charts of a stock's price movement and trading volume, as opposed to focusing on a company's fundamentals and as such, may not match with a report on a company's fundamentals.

We do not undertake to advise you as to any change of our views expressed in this document. While we would endeavor to update the information herein on a reasonable basis, Angel Broking, its subsidiaries and associated companies, their directors and employees are under no obligation to update or keep the information current. Also there may be regulatory, compliance, or other reasons that may prevent Angel Broking and affiliates from doing so. Prospective investors and others are cautioned that any forward-looking statements are not predictions and may be subject to change without notice.

Angel Broking Limited and affiliates, including the analyst who has issued this report, may, on the date of this report, and from time to time, have long or short positions in, and buy or sell the securities of the companies mentioned herein or engage in any other transaction involving such securities and earn brokerage or compensation or act as advisor or have other potential conflict of interest with respect to company/ies mentioned herein or inconsistent with any recommendation and related information and opinions.

Angel Broking Limited and affiliates may seek to provide or have engaged in providing corporate finance, investment banking or other advisory services in a merger or specific transaction to the companies referred to in this report, as on the date of this report or in the past.

Sebi Registration No : INR 010996539