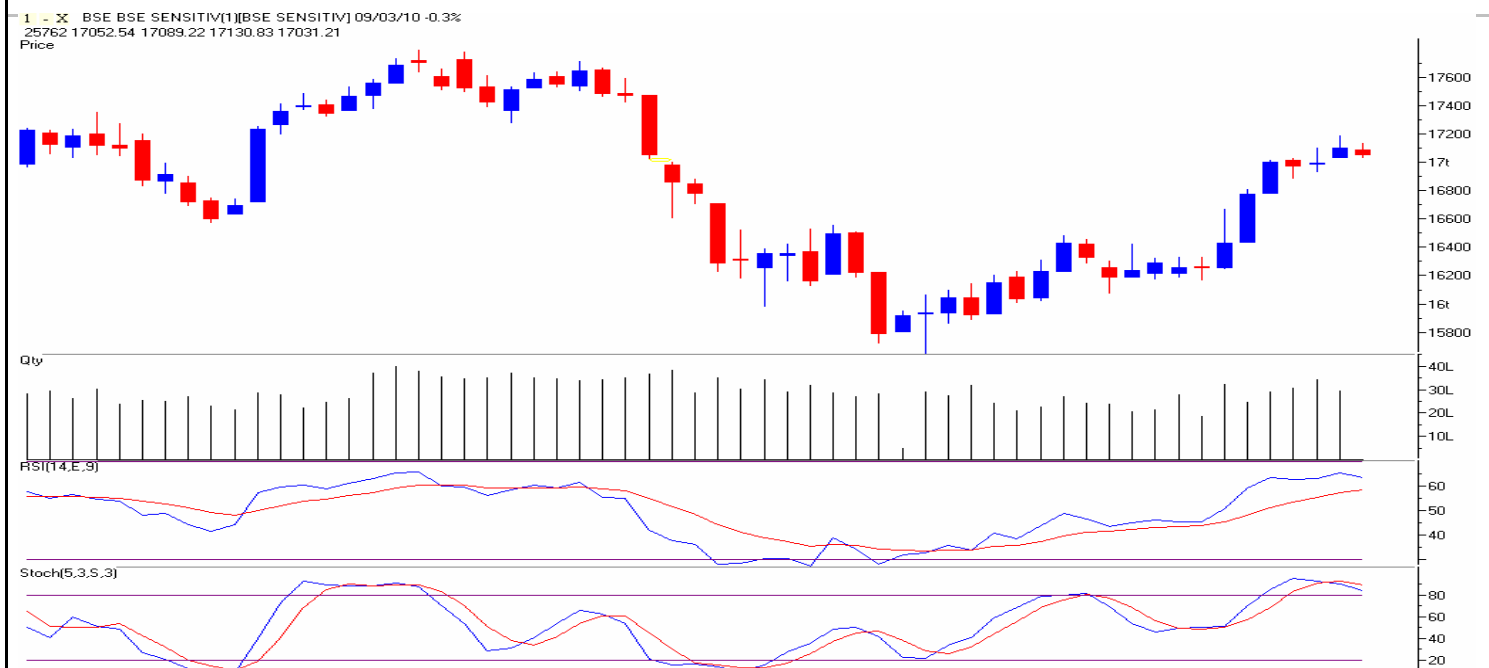


Date : 10/03/2010

Market Summary

Indices			Top 5 Gainers		Top 5 Losers		Sectoral Watch	
	Nifty	Sensex	Stocks	% Gain	Stocks	% Loss	Sector	% G / L
Open	5121.00	17089.00	HDFC	1.79	JPASSOCIATE	3.61	METAL	(1.56)
High	5132.00	17131.00	HDFC BANK	1.39	SUZLON	3.28	PSU	(1.43)
Low	5094.00	17031.00	MARUTI	1.20	IDFC	2.99	OIL&GAS	(1.25)
Close	5102.00	17053.00	INFOSYS	0.96	HINDALCO	2.74	REALTY	(1.09)
% Chg	(0.44)	(0.29)	SUNPHARMA	0.94	TATAMOTORS	2.48	IT	0.85



Source : Falcon

SENSEX CHART

Markets opened on a flat note, traded with negative bias throughout the day to close in the negative territory. On the daily chart, for the fourth consecutive trading session we are witnessing a narrow range body which indicates that the prior trend is losing steam. Hence, if indices trade below 17031 / 5094 then it is likely to test 16890 – 16820 / 5050 – 5030. On the upside 17910 / 5150 levels now remains a major resistance.

Stocks +ve Bias
MARUTI
Stocks -ve Bias
IDFC

PIVOTS

Stocks	Close	S2	S1	Pivot	R1	R2
SENSEX	17053.00	16972.00	17012.00	17072.00	17112.00	17171.00
NIFTY	5102.00	5072.00	5087.00	5109.00	5124.00	5147.00
ABB	839.00	823.00	831.00	843.00	851.00	863.00
ACC	992.00	976.00	984.00	995.00	1002.00	1013.00
AMBUJACEM	115.00	113.00	114.00	115.00	116.00	117.00
AXISBANK	1118.00	1010.00	1064.00	1099.00	1152.00	1187.00
BHARTIARTL	291.00	284.00	288.00	291.00	295.00	298.00
BHEL	2424.00	2397.00	2410.00	2429.00	2442.00	2461.00
BPCL	536.00	526.00	531.00	540.00	546.00	555.00
CAIRN	268.00	264.00	266.00	269.00	271.00	274.00
CIPLA	314.00	308.00	311.00	317.00	321.00	327.00
DLF	312.00	304.00	308.00	314.00	318.00	324.00
GAIL	408.00	400.00	404.00	409.00	413.00	418.00
GRASIM	2827.00	2796.00	2812.00	2828.00	2843.00	2859.00
HCLTECH	361.00	354.00	358.00	361.00	364.00	367.00
HDFC	2659.00	2559.00	2609.00	2637.00	2687.00	2715.00
HDFCBANK	1811.00	1760.00	1786.00	1800.00	1826.00	1840.00
HEROHONDA	1876.00	1837.00	1857.00	1888.00	1907.00	1938.00
HINDALCO	162.00	158.00	160.00	164.00	166.00	170.00
HINDUNILVR	236.00	232.00	234.00	237.00	239.00	242.00
ICICIBANK	925.00	897.00	911.00	923.00	937.00	948.00
IDEA	62.00	61.00	61.00	62.00	63.00	64.00
IDFC	159.00	156.00	158.00	161.00	162.00	166.00
INFOSYSTCH	2684.00	2584.00	2634.00	2668.00	2718.00	2751.00
ITC	251.00	247.00	249.00	251.00	253.00	256.00
JINDALSTEL	689.00	678.00	684.00	691.00	696.00	704.00
JPASSOCIAT	143.00	138.00	141.00	145.00	148.00	152.00
LT	1589.00	1563.00	1576.00	1596.00	1609.00	1628.00
M&M	1130.00	1095.00	1112.00	1126.00	1144.00	1158.00
MARUTI	1500.00	1455.00	1477.00	1493.00	1515.00	1531.00
NTPC	203.00	200.00	202.00	204.00	205.00	207.00
ONGC	1096.00	1083.00	1090.00	1097.00	1104.00	1111.00
PNB	921.00	905.00	913.00	924.00	932.00	942.00
POWERGRID	109.00	107.00	108.00	109.00	110.00	111.00
RANBAXY	453.00	444.00	449.00	457.00	461.00	469.00
RCOM	163.00	160.00	162.00	163.00	164.00	166.00
RELCAPITAL	801.00	784.00	793.00	802.00	810.00	819.00
RELIANCE	990.00	973.00	982.00	997.00	1005.00	1020.00
RELINFRA	1001.00	981.00	991.00	1008.00	1018.00	1035.00
RPOWER	142.00	140.00	141.00	143.00	145.00	147.00
SAIL	234.00	230.00	232.00	235.00	237.00	240.00
SBIN	2045.00	2006.00	2025.00	2052.00	2071.00	2097.00
SIEMENS	735.00	716.00	725.00	734.00	744.00	753.00
STER	805.00	791.00	798.00	807.00	814.00	823.00
SUNPHARMA	1655.00	1617.00	1636.00	1649.00	1668.00	1681.00
SUZLON	77.00	75.00	76.00	78.00	79.00	81.00
TATAMOTORS	776.00	753.00	764.00	775.00	786.00	797.00
TATAPOWER	1331.00	1306.00	1318.00	1333.00	1345.00	1359.00
TATASTEEL	615.00	605.00	610.00	616.00	621.00	627.00
TCS	769.00	755.00	762.00	770.00	777.00	786.00
UNITECH	75.00	73.00	74.00	75.00	77.00	78.00
WIPRO	702.00	692.00	697.00	705.00	710.00	717.00

RESEARCH TEAM

Shardul Kulkarni	Head - Technicals
Ajit Joshi	AVP - TAS
Brijesh Ail	Manager - TAS
Mileen Vasudeo	Technical Analyst
Krunal Dayma	Technical Analyst

For any Queries, Suggestions and Feedback kindly mail to vasudeo.kamalakant@angeltrade.com

Research Team: 022-3952 6600

Website: www.angelbroking.com

DISCLAIMER: This document is not for public distribution and has been furnished to you solely for your information and must not be reproduced or redistributed to any other person. Persons into whose possession this document may come are required to observe these restrictions.

Opinion expressed is our current opinion as of the date appearing on this material only. While we endeavor to update on a reasonable basis the information discussed in this material, there may be regulatory, compliance, or other reasons that prevent us from doing so. Prospective investors and others are cautioned that any forward-looking statements are not predictions and may be subject to change without notice. Our proprietary trading and investment businesses may make investment decisions that are inconsistent with the recommendations expressed herein.

The information in this document has been printed on the basis of publicly available information, internal data and other reliable sources believed to be true and are for general guidance only. While every effort is made to ensure the accuracy and completeness of information contained, the company takes no guarantee and assumes no liability for any errors or omissions of the information. No one can use the information as the basis for any claim, demand or cause of action.

Recipients of this material should rely on their own investigations and take their own professional advice. Each recipient of this document should make such investigations as it deems necessary to arrive at an independent evaluation of an investment in the securities of companies referred to in this document (including the merits and risks involved), and should consult their own advisors to determine the merits and risks of such an investment. Price and value of the investments referred to in this material may go up or down. Past performance is not a guide for future performance. Certain transactions - futures, options and other derivatives as well as non-investment grade securities - involve substantial risks and are not suitable for all investors. Reports based on technical analysis centers on studying charts of a stock's price movement and trading volume, as opposed to focusing on a company's fundamentals and as such, may not match with a report on a company's fundamentals.

We do not undertake to advise you as to any change of our views expressed in this document. While we would endeavor to update the information herein on a reasonable basis, Angel Broking, its subsidiaries and associated companies, their directors and employees are under no obligation to update or keep the information current. Also there may be regulatory, compliance, or other reasons that may prevent Angel Broking and affiliates from doing so. Prospective investors and others are cautioned that any forward-looking statements are not predictions and may be subject to change without notice.

Angel Broking Limited and affiliates, including the analyst who has issued this report, may, on the date of this report, and from time to time, have long or short positions in, and buy or sell the securities of the companies mentioned herein or engage in any other transaction involving such securities and earn brokerage or compensation or act as advisor or have other potential conflict of interest with respect to company/ies mentioned herein or inconsistent with any recommendation and related information and opinions.

Angel Broking Limited and affiliates may seek to provide or have engaged in providing corporate finance, investment banking or other advisory services in a merger or specific transaction to the companies referred to in this report, as on the date of this report or in the past.

Sebi Registration No : INR 010996539